

A Major Scale

B \flat Instruments = Concert G

E \flat Instruments = Concert C

F Instruments = Concert D

Scale

Musical notation for the A Major Scale in treble clef, common time. The key signature has three sharps (F#, C#, G#). The scale is written in two lines: the first line shows the ascending scale, and the second line shows the descending scale. The final note of the descending scale is a whole note chord consisting of the notes A, C, and E.

Velocity

Musical notation for the A Major Scale in treble clef, common time, with slurs indicating velocity changes. The key signature has three sharps. The notation shows the ascending and descending lines with slurs over groups of notes, indicating where the velocity should change.

Intervals

Musical notation for the A Major Scale in treble clef, common time, showing intervals between notes. The key signature has three sharps. The notation shows the ascending and descending lines with intervals between notes, illustrating the stepwise motion of the scale.

Thirds

Musical notation for the A Major Scale in treble clef, common time, showing thirds. The key signature has three sharps. The notation shows the ascending and descending lines with thirds between notes, illustrating the interval of a third.

Musical notation for the A Major Scale in treble clef, common time, showing thirds. The key signature has three sharps. The notation shows the ascending and descending lines with thirds between notes, illustrating the interval of a third.

Arpeggios

Musical notation for the A Major Scale in treble clef, common time, showing arpeggios. The key signature has three sharps. The notation shows the ascending and descending lines with arpeggios between notes, illustrating the interval of a third. There are triplets indicated by a '3' over the notes.

Two Octave Major Scale

Musical notation for the A Major Scale in treble clef, common time, showing two octaves. The key signature has three sharps. The notation shows the ascending and descending lines with two octaves. The first line starts with an 8^{va} marking, indicating an octave transposition if necessary.

Musical notation for the A Major Scale in treble clef, common time, showing two octaves. The key signature has three sharps. The notation shows the ascending and descending lines with two octaves. The first line starts with an 8^{va} marking, indicating an octave transposition if necessary.

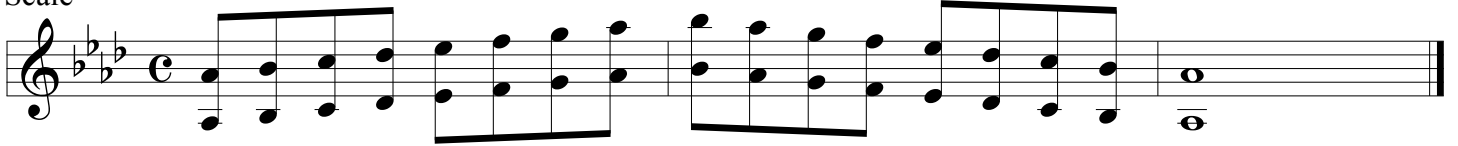
A \flat Major Scale

B \flat Instruments this is Concert G \flat

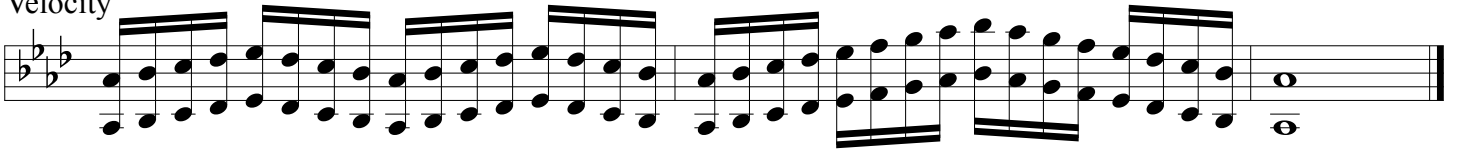
E \flat Instruments this is Concert C \flat

F Instruments this is Concert D \flat

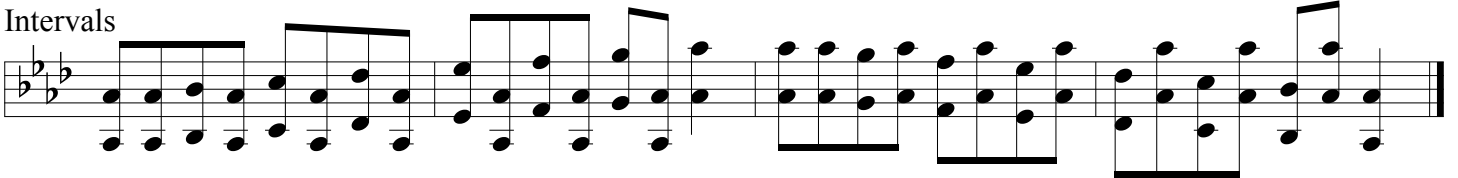
Scale




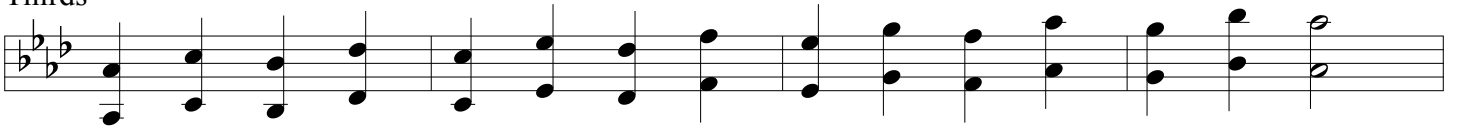
Velocity



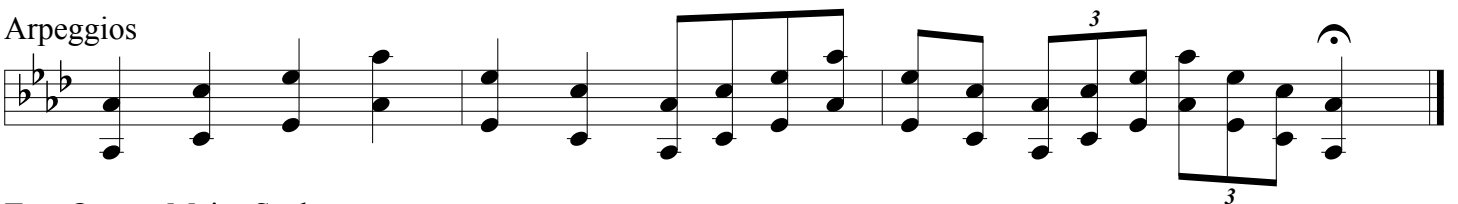
Intervals



Thirds



Arpeggios



Two Octave Major Scale

8^{va} If necessary



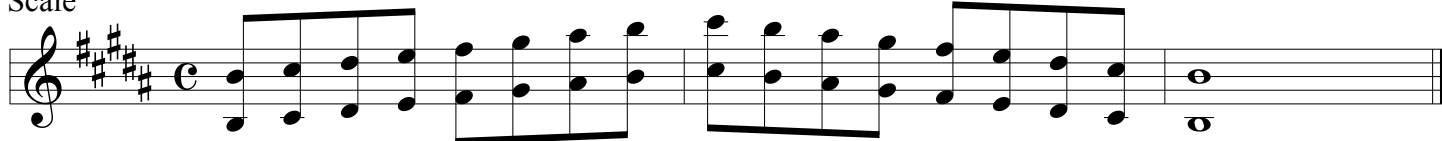
B Major Scale

B \flat Instruments this is Concert A

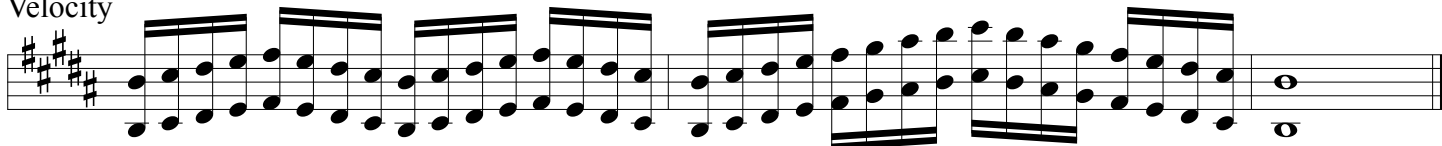
E \flat Instruments this is Concert D

F Instruments this is Concert E

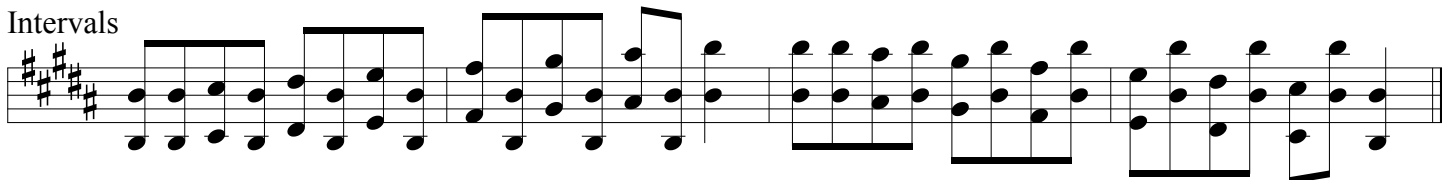
Scale



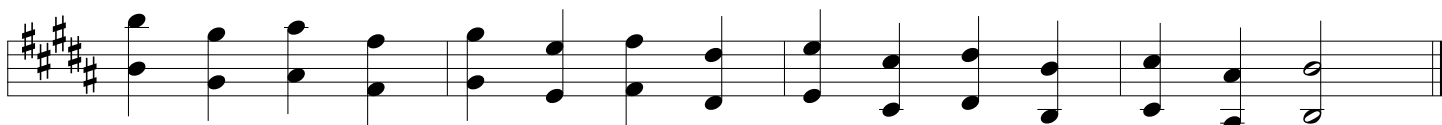
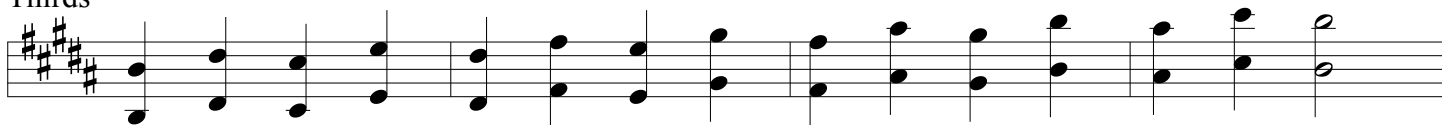
Velocity



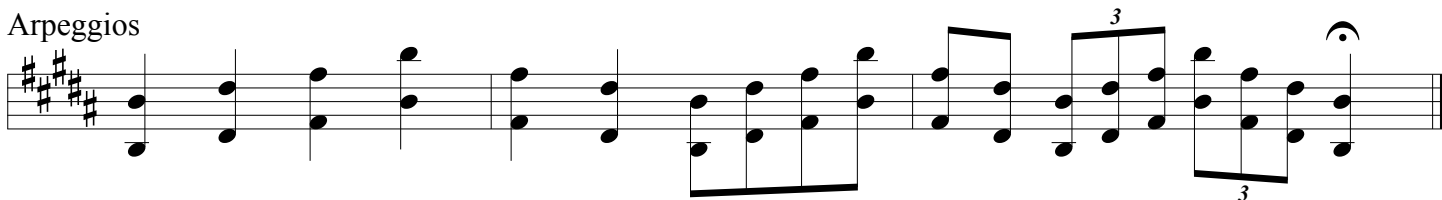
Intervals



Thirds



Arpeggios



Two Octave Major Scale



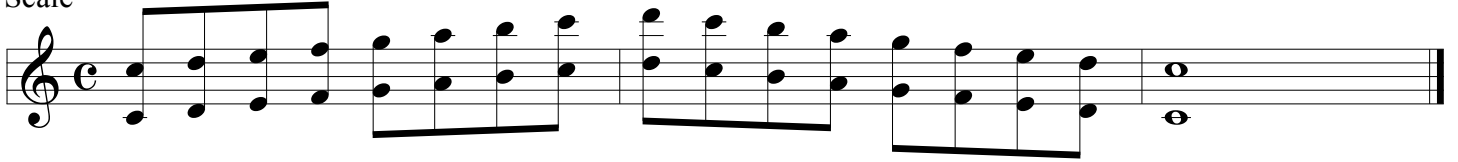
C Major Scale

B \flat Instruments this is Concert B \flat

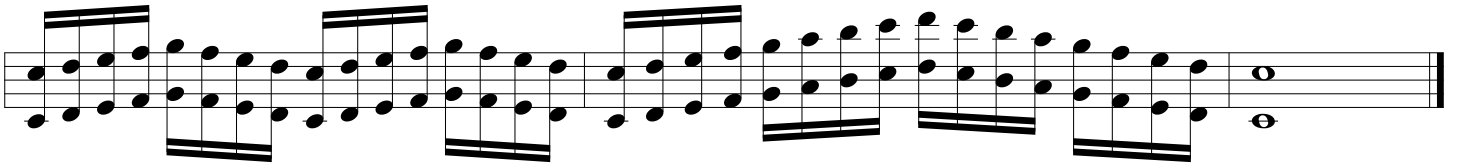
E \flat Instruments this is Concert E \flat

F Instruments this is Concert F

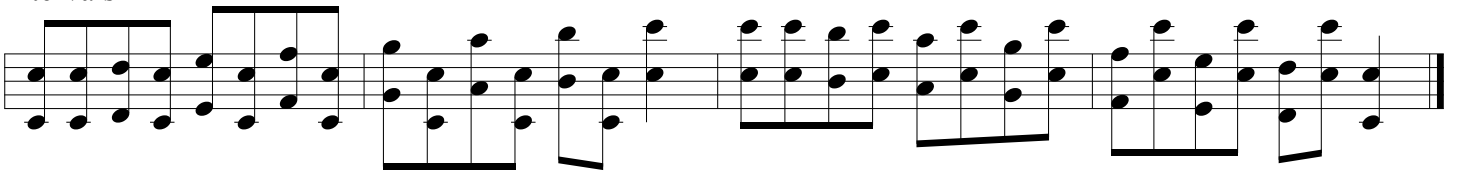
Scale



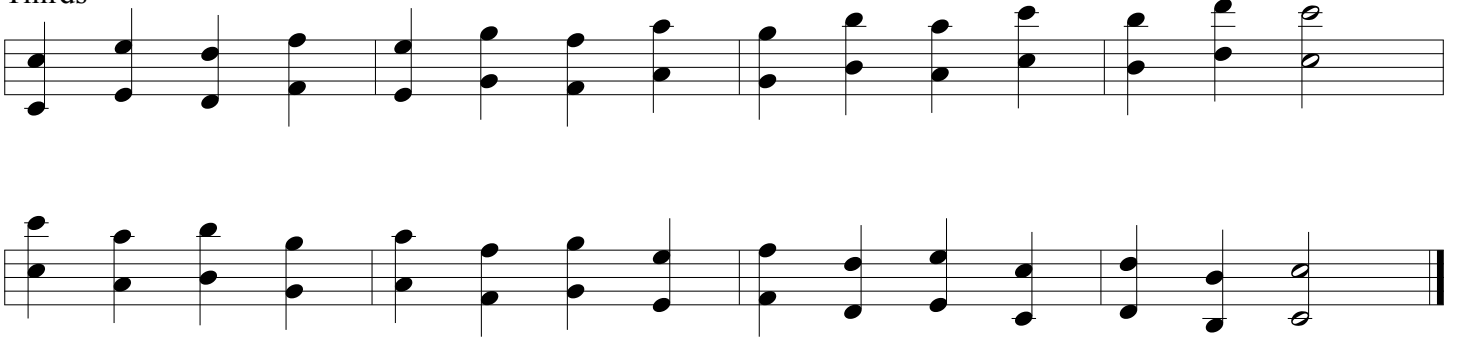
Velocity



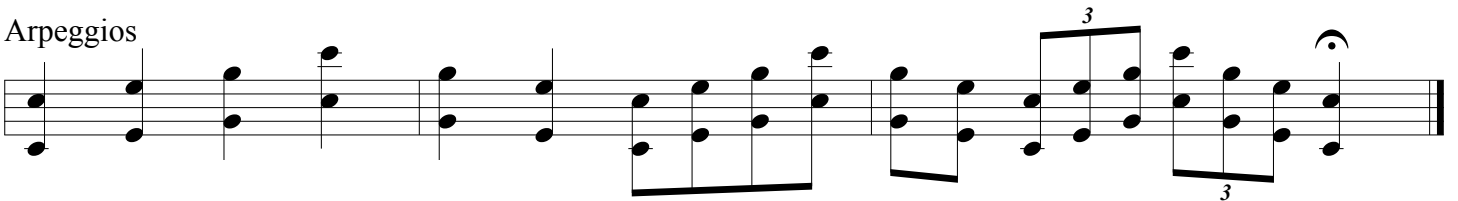
Intervals



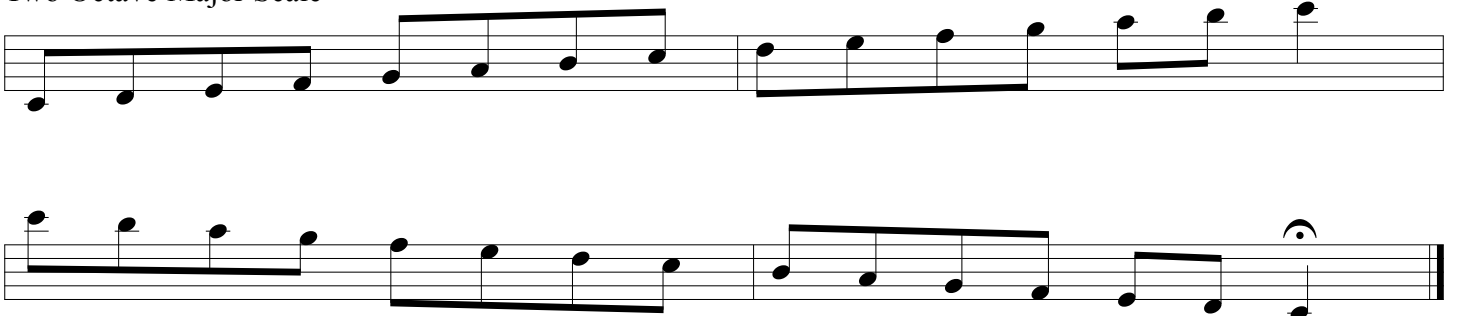
Thirds



Arpeggios



Two Octave Major Scale



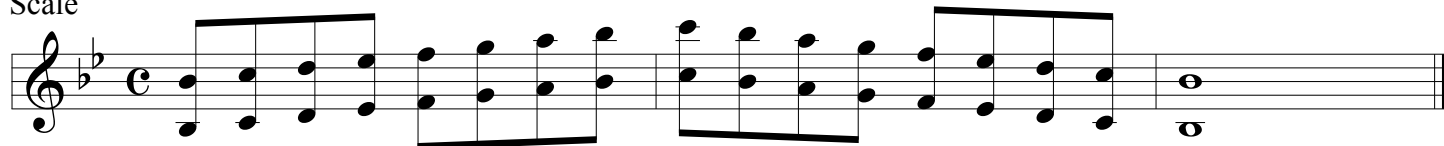
B \flat Major Scale

B \flat Instruments this is Concert A \flat

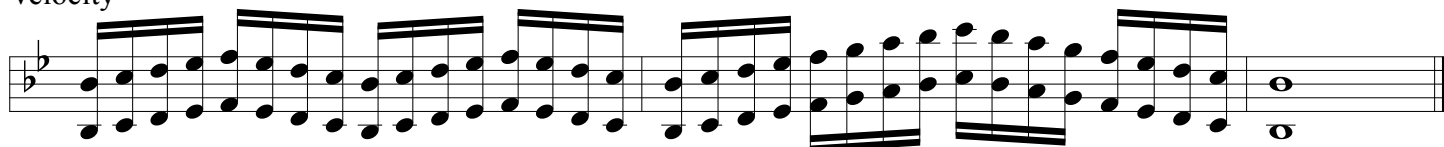
E \flat Instruments this is Concert D \flat

F Instruments this is Concert E \flat

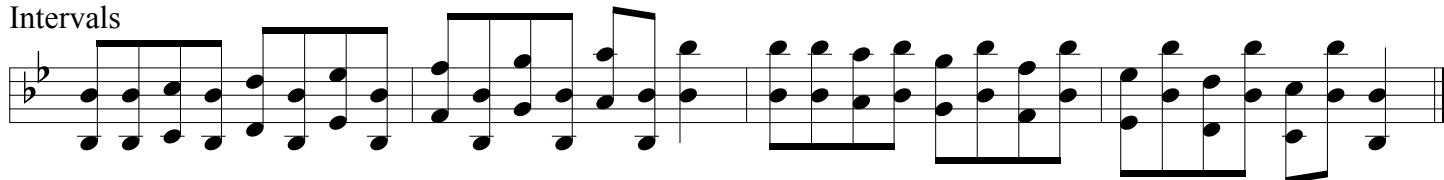
Scale



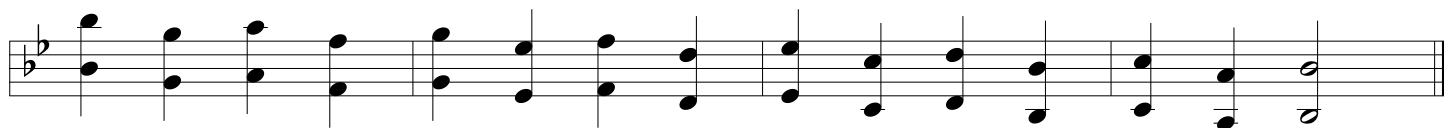
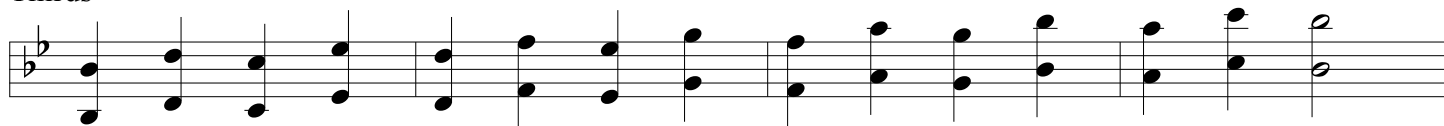
Velocity



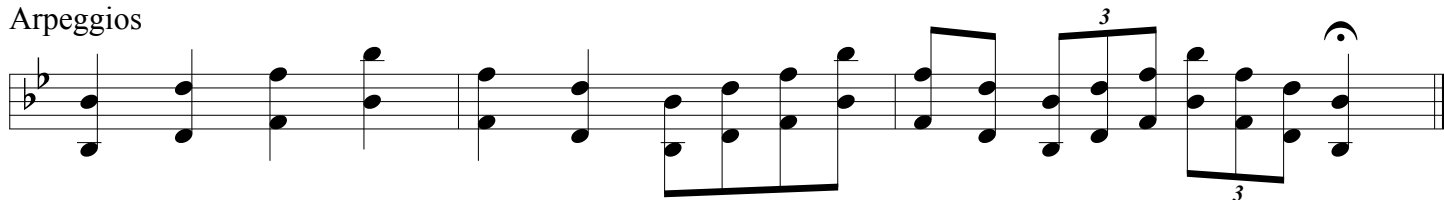
Intervals



Thirds



Arpeggios



Two Octave Major Scale



C# Major Scale

B \flat Instruments this is Concert B

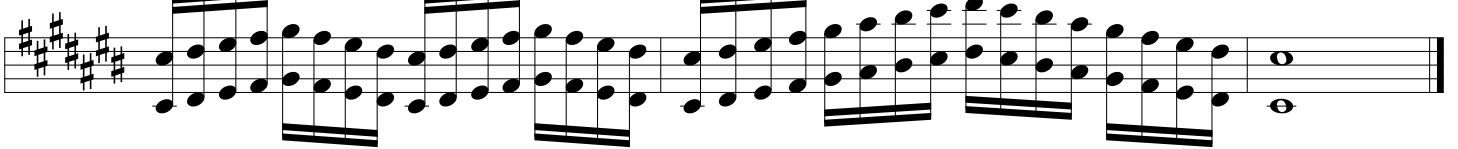
E \flat Instruments this is Concert E

F Instruments this is Concert F \sharp

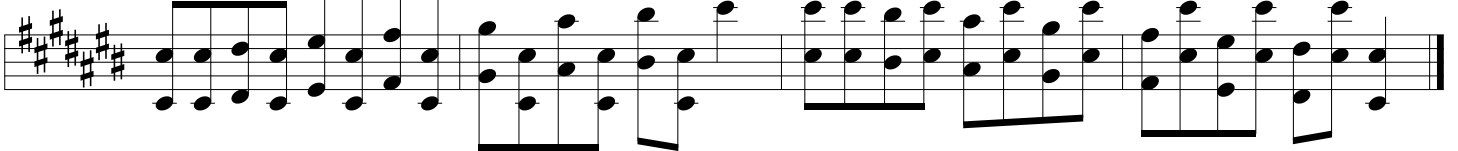
Scale



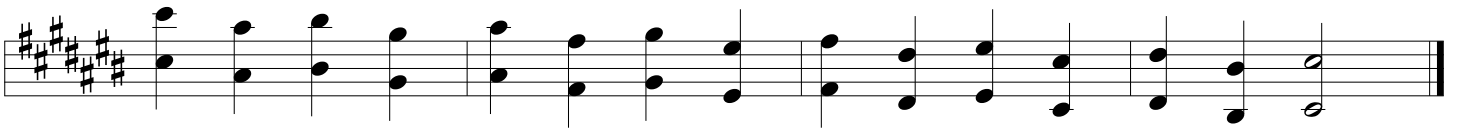
Velocity



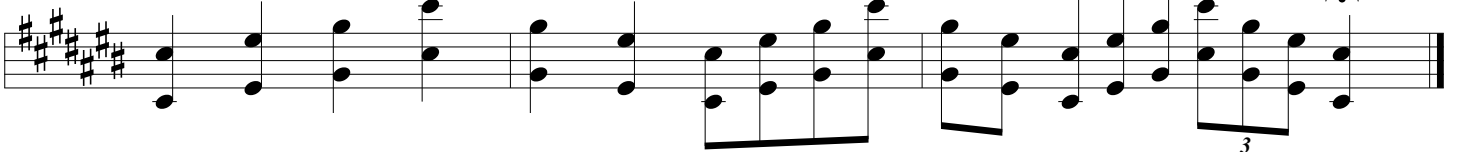
Intervals



Thirds



Arpeggios



Two Octave Major Scale



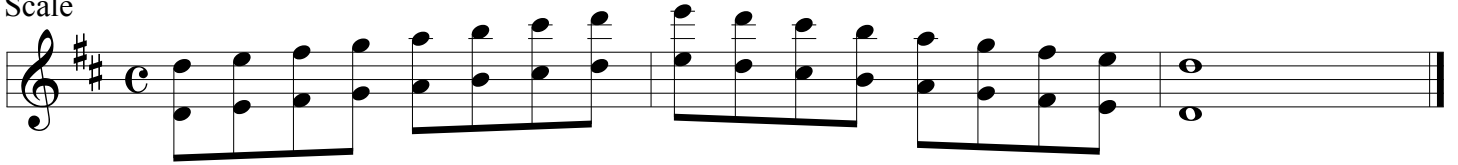
D Major Scale

B \flat Instruments this Concert C

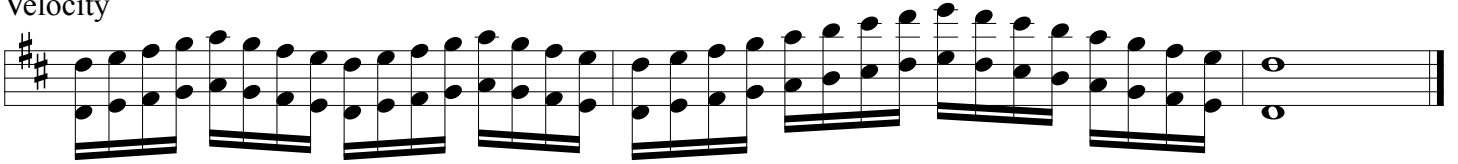
E \flat Instruments this Concert F

F Instruments this is Concert G

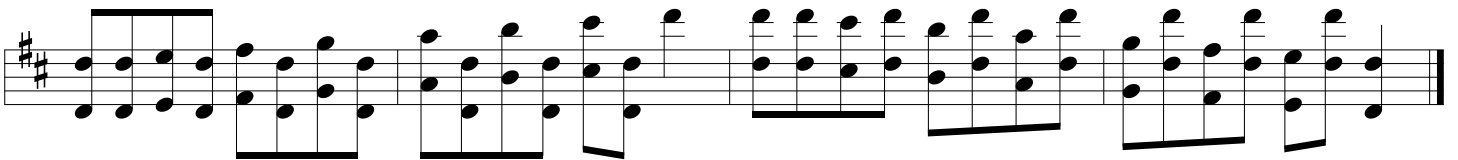
Scale



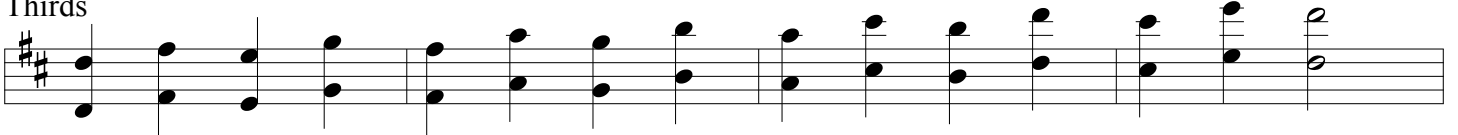
Velocity



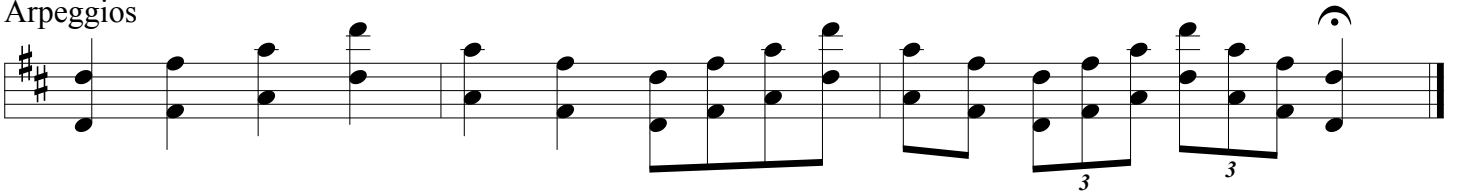
Intervals



Thirds



Arpeggios



Two Octave Major Scale



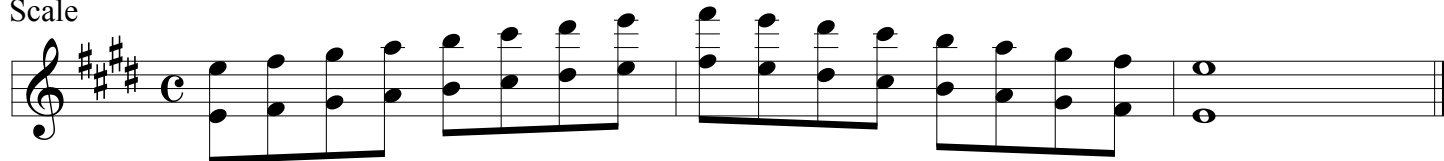
E Major Scale

B \flat Instruments this is Concert D

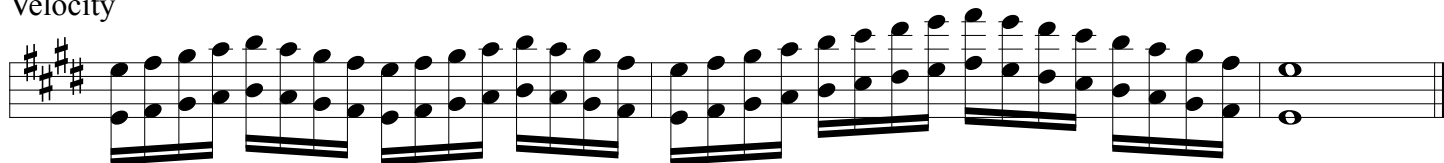
E \flat Instruments this is Concert G

F Instruments this is Concert A

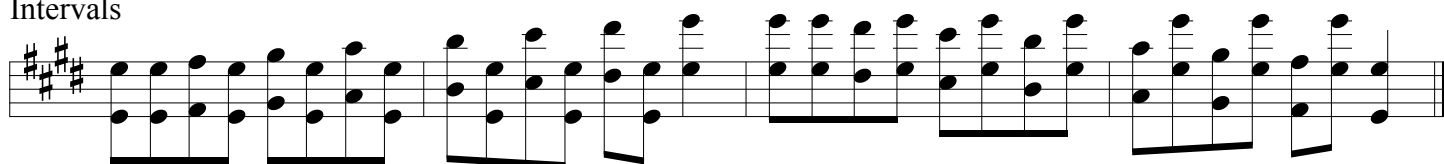
Scale



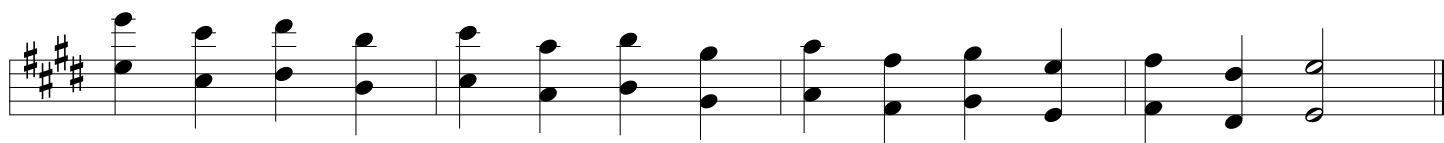
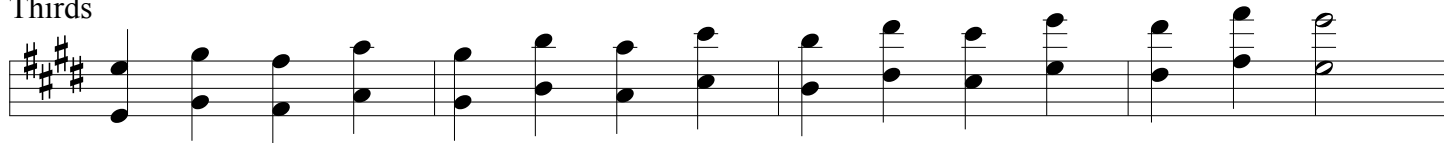
Velocity



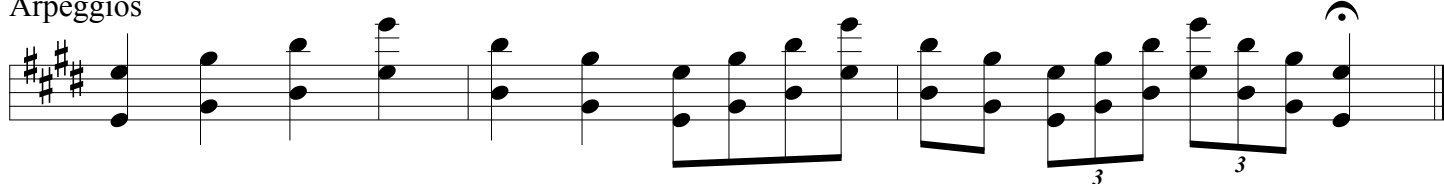
Intervals



Thirds



Arpeggios



Two Octave Major Scale



E \flat Major Scale

B \flat Instruments = Concert D \flat

E \flat Instruments = Concert G \flat

F Instruments = Concert A \flat

Scale

Musical notation for the E \flat major scale, showing the ascending and descending lines. The key signature has two flats (B \flat and E \flat), and the time signature is common time (C). The scale is written on a single staff.

Velocity

Musical notation for the E \flat major scale with velocity markings, showing the ascending and descending lines. The key signature has two flats (B \flat and E \flat), and the time signature is common time (C). The scale is written on a single staff.

Intervals

Musical notation for the E \flat major scale showing intervals between notes. The key signature has two flats (B \flat and E \flat), and the time signature is common time (C). The scale is written on a single staff.

Thirds

Musical notation for the E \flat major scale showing thirds. The key signature has two flats (B \flat and E \flat), and the time signature is common time (C). The scale is written on a single staff.

Musical notation for the E \flat major scale showing thirds. The key signature has two flats (B \flat and E \flat), and the time signature is common time (C). The scale is written on a single staff.

Arpeggios

Musical notation for the E \flat major scale showing arpeggios. The key signature has two flats (B \flat and E \flat), and the time signature is common time (C). The scale is written on a single staff.

Two Octave Major Scale

Musical notation for the E \flat major scale showing two octaves. The key signature has two flats (B \flat and E \flat), and the time signature is common time (C). The scale is written on a single staff.

Musical notation for the E \flat major scale showing two octaves. The key signature has two flats (B \flat and E \flat), and the time signature is common time (C). The scale is written on a single staff.

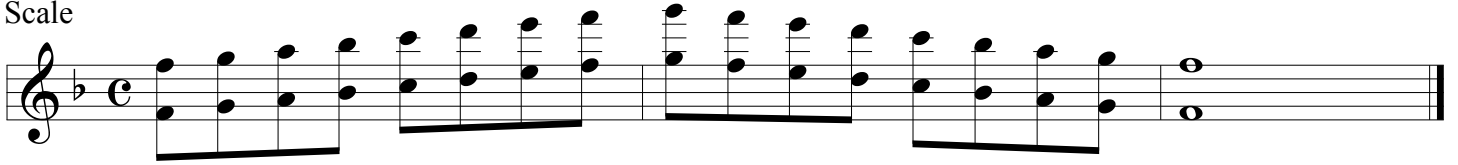
F Major Scale

B \flat Instruments = Concert E \flat

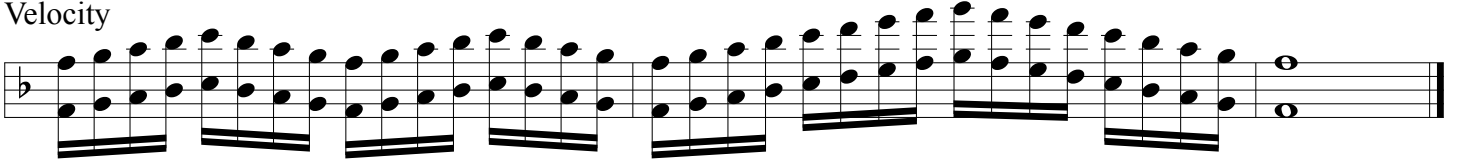
E \flat Instruments = Concert A \flat

F Instruments = Concert B \flat

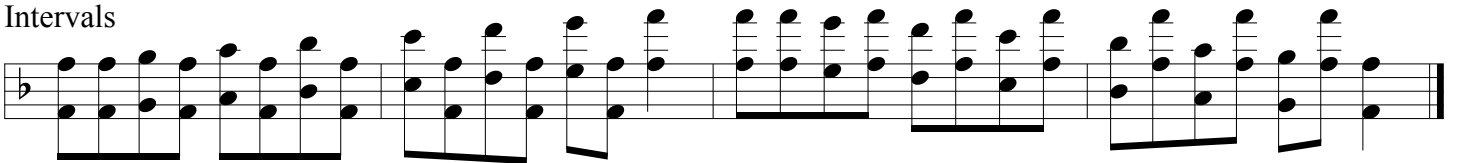
Scale



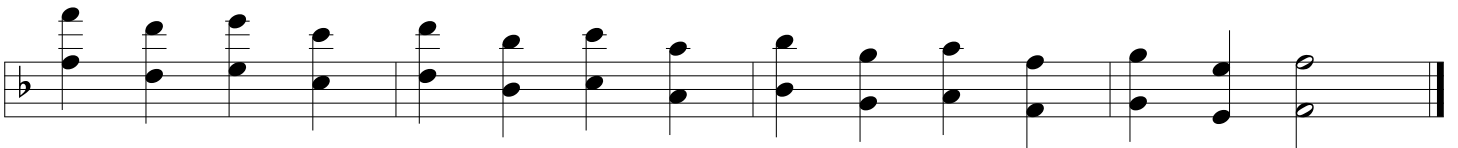
Velocity



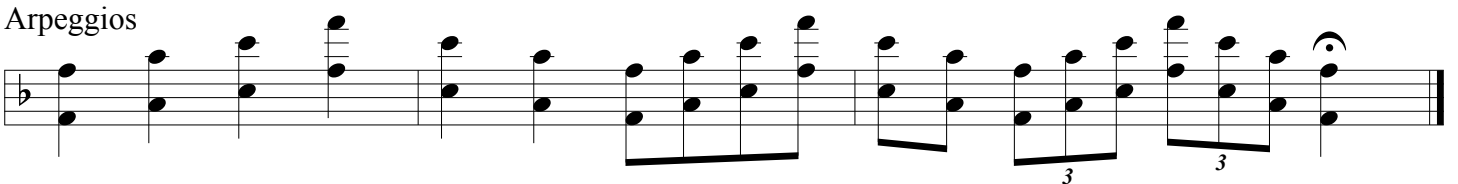
Intervals



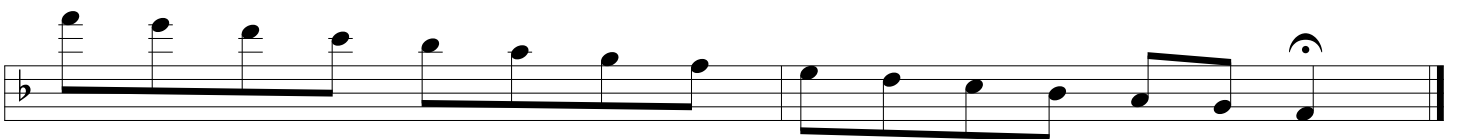
Thirds



Arpeggios



Two Octave Major Scale



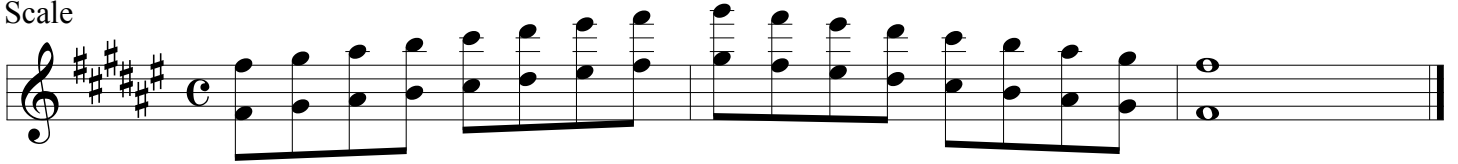
F# Major Scale

B \flat Instruments = Concert E

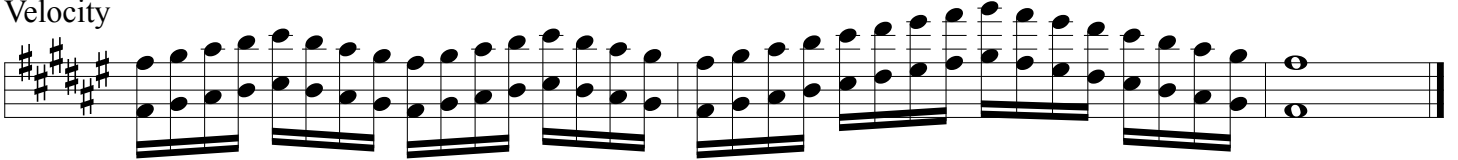
E \flat Instruments = Concert A

F Instruments = Concert B

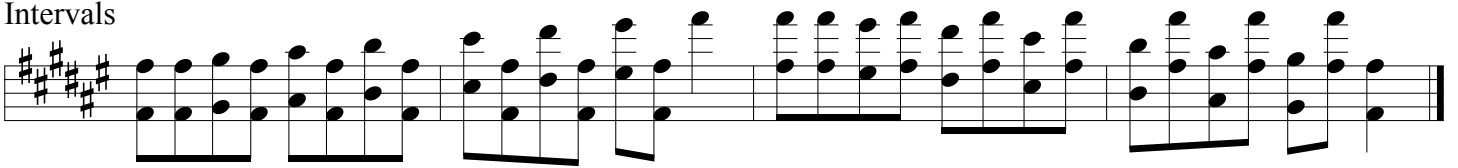
Scale



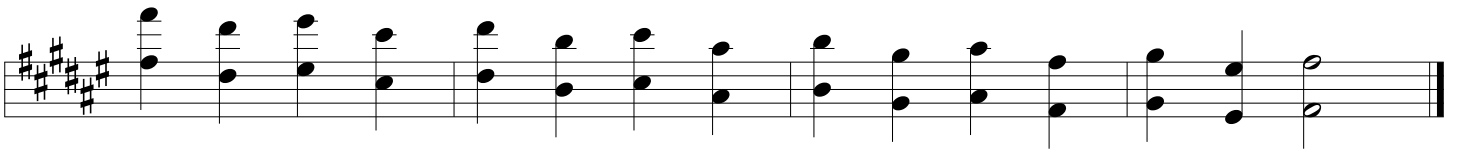
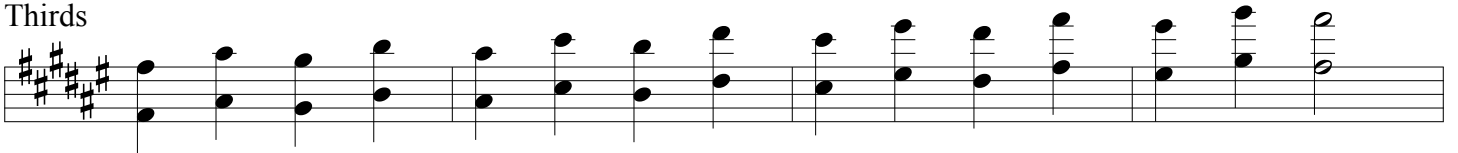
Velocity



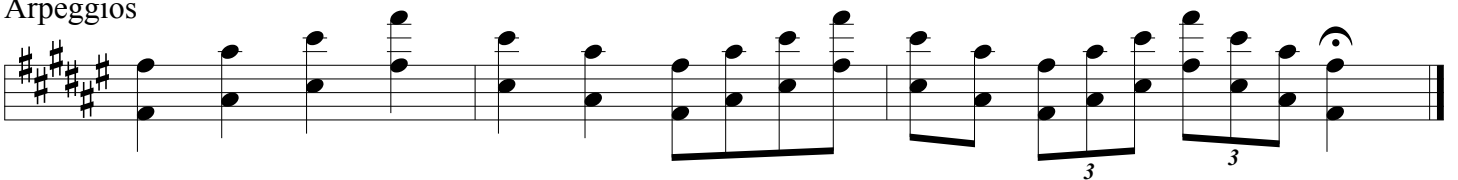
Intervals



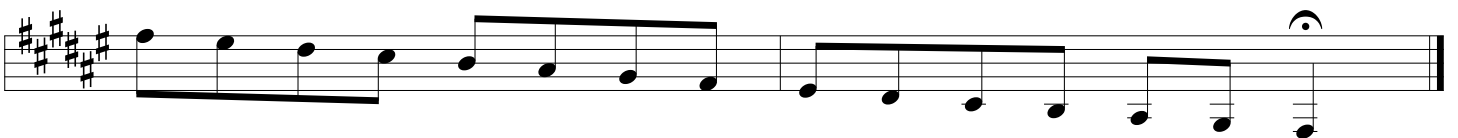
Thirds



Arpeggios



Two Octave Major Scale



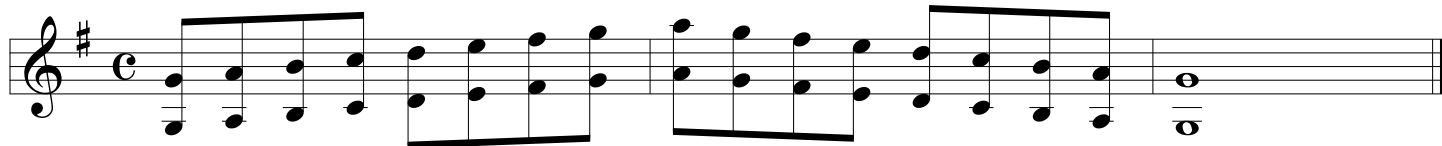
G Major Scale

B \flat Instruments = Concert F

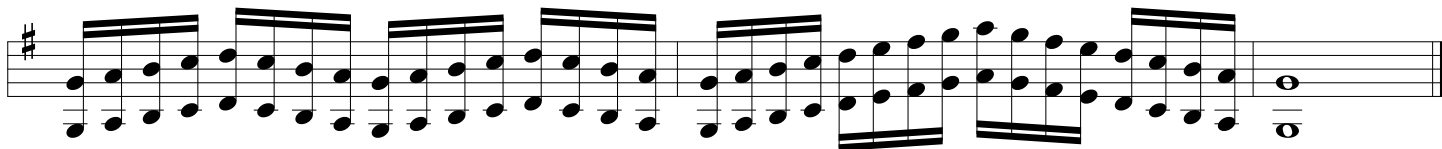
E \flat Instruments = Concert B \flat

F Instruments = Concert C

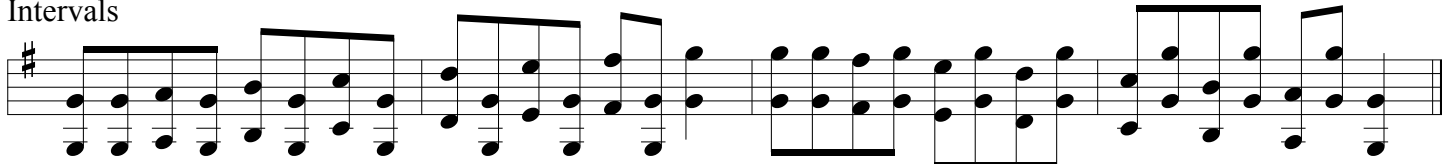
Scale



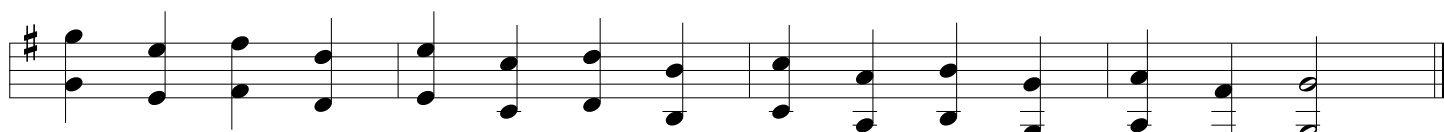
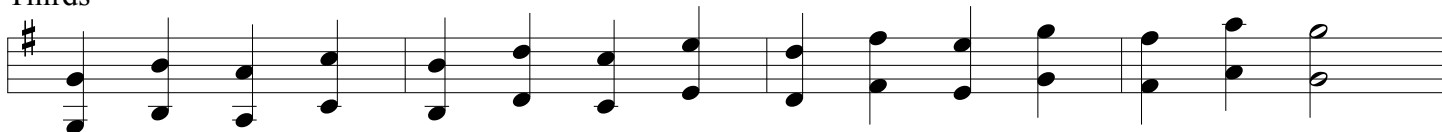
Velocity



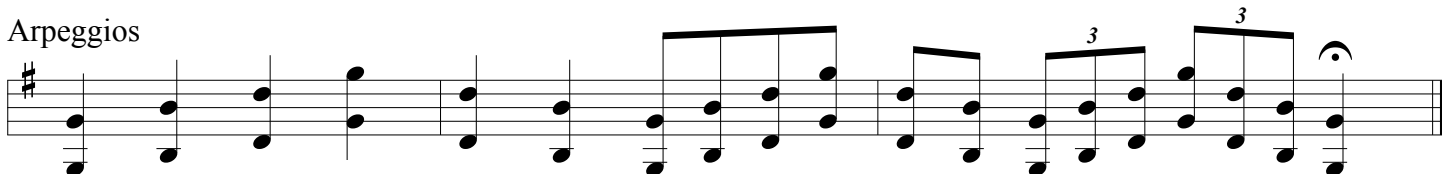
Intervals



Thirds



Arpeggios



Two Octave Major Scale

